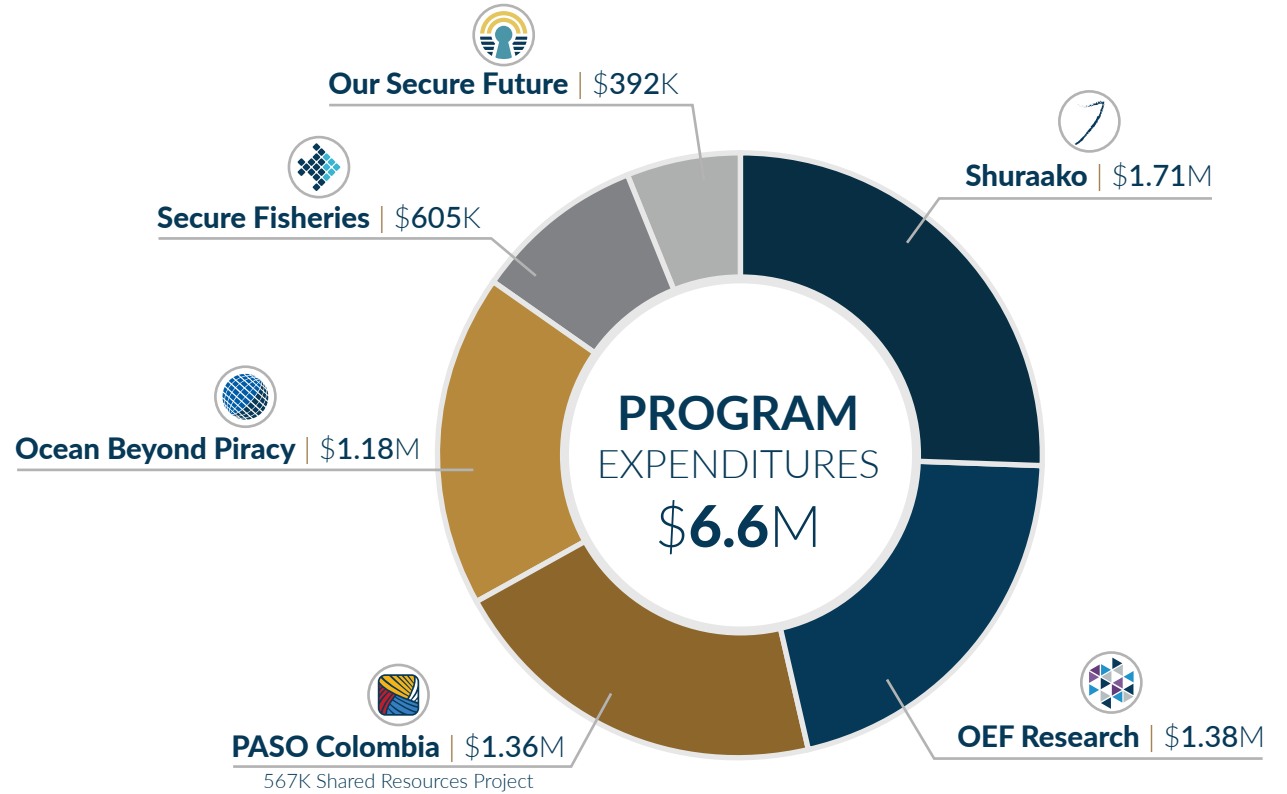
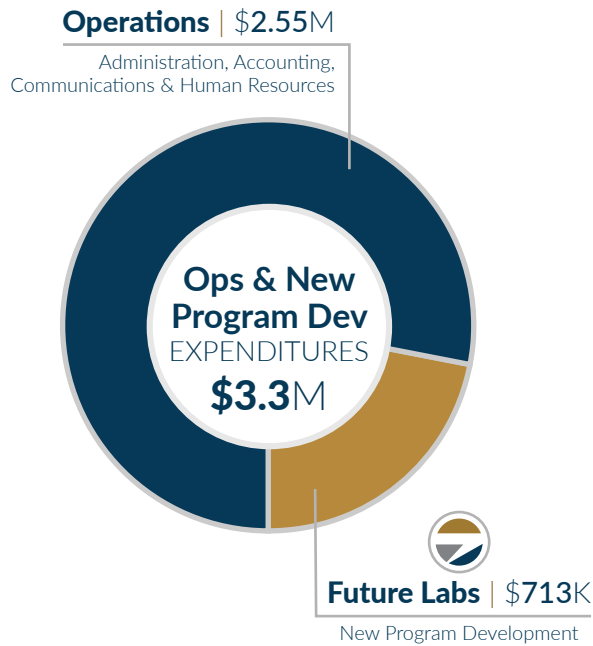


2017 FINANCIALS

CONSOLIDATED BALANCE SHEET

Current Assets	\$35,097,832	NET ASSETS	TOTAL LIABILITIES & NET ASSETS
Non-current Assets	\$29,121,136		
TOTAL ASSETS	\$64,218,968		\$64.2M
Current Liabilities	\$2,768,479		

TOTAL EXPENDITURE | \$9.9M



BUDGETED VS ACTUAL FINANCIAL TRENDS (2015-2018)

